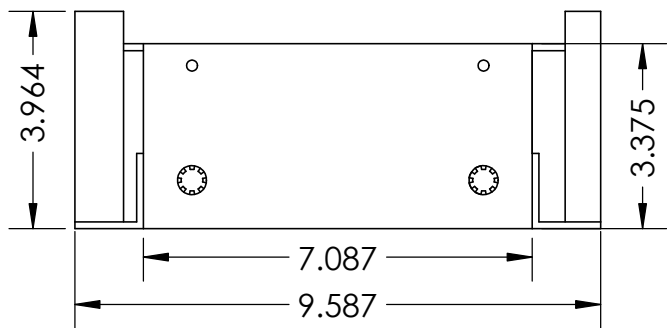
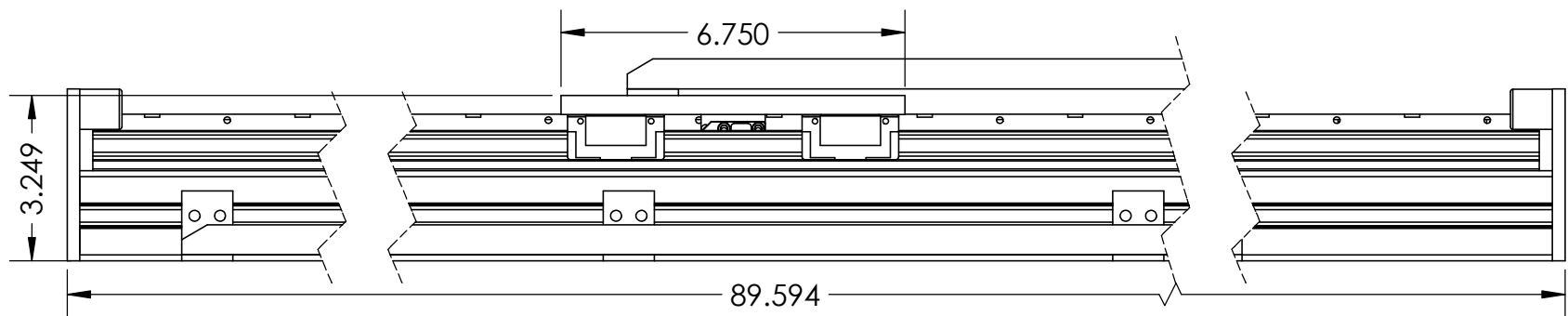
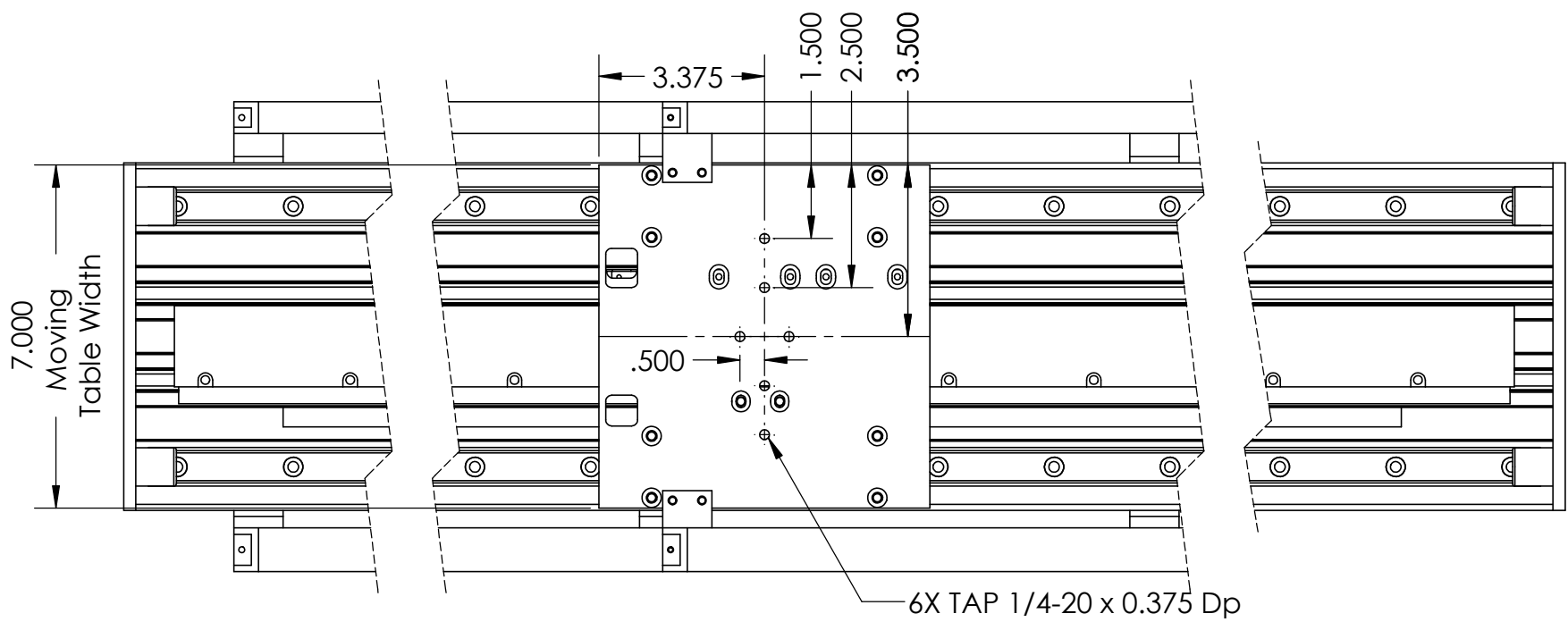


REVISION TABLE					
REV	ECN#	DESCRIPTION	REV BY	APPROVED	DATE
---	---	Original Drawing	SDC	MPW	3-28-17



1

2

3

4

5

A

A

B

B

C

C

D

D

DUAL RAIL POSITIONING STAGE SPECIFICATIONS		
Motor P/N	BLDM-B12	
Stroke	80.5 in	2044.7 mm
Encoder Resolution	1 micron	
Bearing Type	Recirculating Ball	
Moving Mass	5.0 lbs	2.26 kg
Total Mass	95 lbs	43 kg
Resistance @ 20C	8.4 ohms	
Inductance @ 20C	5.0 mH	
Electrical Time Constant	1 msec	
Motor Constant	2.21 LBS/SQRT(Watt)	9.8 N/SQRT(Watt)
Force Constant	6.4 LBS/Amp	28.5 N/Amp
Back EMF	0.72 V/ips	28.5 V/m/sec
Force @ 100% Duty	10.2 lbs	45.6 N
Power @ 100% Duty	21.5 watts	
Current @ 100% Duty	1.6 amps	
Force @ 10% Duty	30.7 lbs	137 N
Power @ 10% Duty	194 watts	
Current @ 10% Duty	4.8 amps	
Stage Length	93.0 in	2362 mm
Stage Width	10.32 in	262 mm
Stage Height	3.96 in	101 mm

